

Alessandro Schiattarella

## Strano



## Technical Rider

# Technical rider Strano 2017

This technical rider (including 10 pages) contains the specific minimum requirements for a successful performance of Alessandro Schiattarella's "Strano" and is a part of the contract between the presenter / venue and Alessandro Schiattarella. This technical rider cannot be modified without acceptance of the company.

An adapted stage and light plots will be provided beforehand if you deliver the technical drawings of you venue minimum 4 weeks before the intended show date. Please send the information to LD Minna Heikkilä.

Choreographer: Alessandro Schiattarella  
email: [alessandroschiattarella@gmail.com](mailto:alessandroschiattarella@gmail.com)  
phone: +41 77 920 32 48

People travelling with the performance: 7

Performers: Alessandro Schiattarella, Erwin Aljukic,  
Luciana Croatto, Maryline Muller,  
Kihako Narisawa, Shona Bridge

LD / Technician: Minna Heikkilä  
email: [mpheffects@gmail.com](mailto:mpheffects@gmail.com)  
phone: +41 78 635 52 54

Production name: Strano

Producer: Kathrin Walde  
email: [info@kathrinwalde.ch](mailto:info@kathrinwalde.ch)  
phone: +41 76 55 82 813

Duration: ca. 60 minutes

All indications of this technical rider are exhaustive.

## 1. SPACE REQUIREMENTS:

"Strano" is performed on open, black box type space and both performers and audience should be on the same floor level. For this we need approximately 14 meters wide and 14 meters deep unobstructed and even floor area. The audience seating will be placed around our dance floor, on stage. Proscenium stages are not suitable for our performance, unless big enough, so that we can also fit the whole audience there.

If your space is significantly bigger than 14 x 14 meters, then we would like to close it with black curtains on one end, behind the audience seating.

We will bring:

A dance floor with specific finish, size 14.00m x 6.00m  
( three rolls à 14.00 x 2.00m)

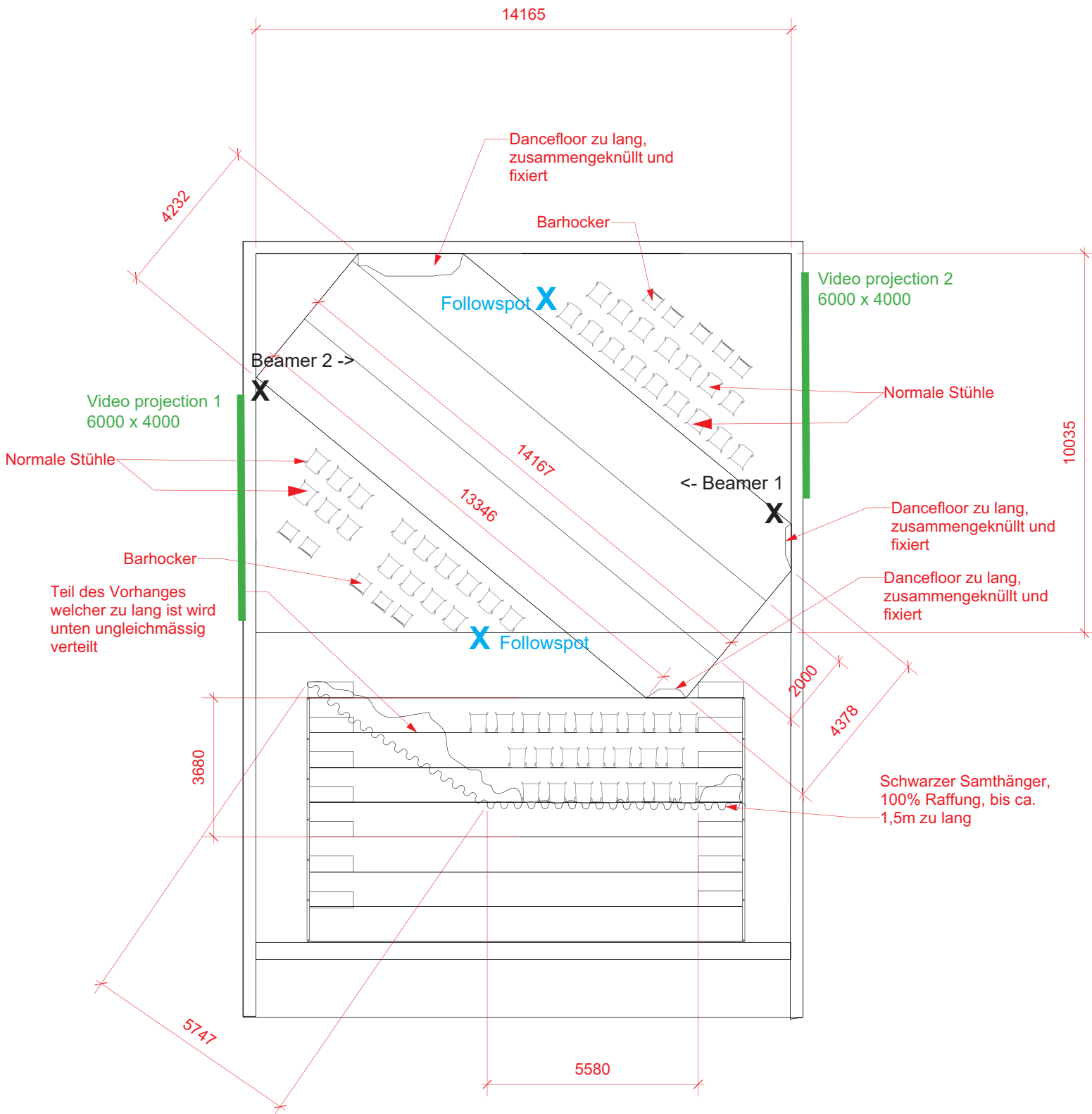
The floor will be placed diagonally in the space, please see the attached stage plan on the next page for details. We don't need dance floor from you.

The stage and dressing rooms must be wheel chair accessible!

Rigging height minimum 5,40 m.

No curtains, legs or borders on stage.





Grundplan mit Bemessung

Projekt-Nr. 10021	Index A	Plan-Nr. 100	Maßstab 1:100
Datum gez. 18.3.2017	Bauvorhaben Strano		
Datum gepr.			
Gezeichnet Giger	Zeichnung roxy.vwx		
Geprüft	Auftraggeber A. Schiattarella		

For tech, please provide:

**2 PERSONNEL NEEDED:**

- 1 Sound technician during the get-in and shows
- 1-2 Light / stage / video technician during the get-in
- 1 stage technician for the load-out

**3 SOUND:**

We need from you:

Normal stereo sound-system / PA with subwoofer, covering the whole stage and audience areas.

- 1 Stereo channel on mixing console for the Mac Book (mini-jack)

We will bring:

- 1 Mac Book Pro with Qlab

**4 VIDEO:**

We need from you:

- 2 Video beamers 5000Ansilumen with preferably in-built shutter and optics that can provide 6.00m wide image at 10.00m distance.
- 1 DVD-player
- 1 Monitor, ca 20"

We will project directly on the walls and don't need any screens etc.

We will bring:

- 1 HD camcorder with respective cables to connect from HDMI to VGA



Projection 1

Alessandro Schiattarella "Strano"



Projection 2

Technical rider

18 November 2017 6:38 PM

Page 5/10

## 5 LIGHT:

We need from you:

68 dimmer channels including audience light

on the rig:

- 40 Par 64 CP62
- 12 ETC Source 4 25-50deg  
WITH Rosco #132 frost filter
- 11 PC 1kW + barn doors, preferably Robert Juliat  
WITH Rosco #132 frost filter
- 3 PC 2kW + barn doors, preferably Robert Juliat  
WITH Lee 200

All the fixtures must be on separate channels!

on the floor:

- 2 PC 1kW + barn doors (1 dimmer ch, 1 direct power)
- + 2 small stands for above mentioned PC 1kW to be used as follow-spots
- + 2 hand dimmers up to 2000W for the PCs
- 2 ETC Source Four Zoom 25-50 on floor plate / floor stand (1 dimmer ch)

Please see attached stage / light plot and focus reference on the following pages.

We will bring:

- 1 GrandMA OnPC and 2-port Node, with DMX – no art-net!

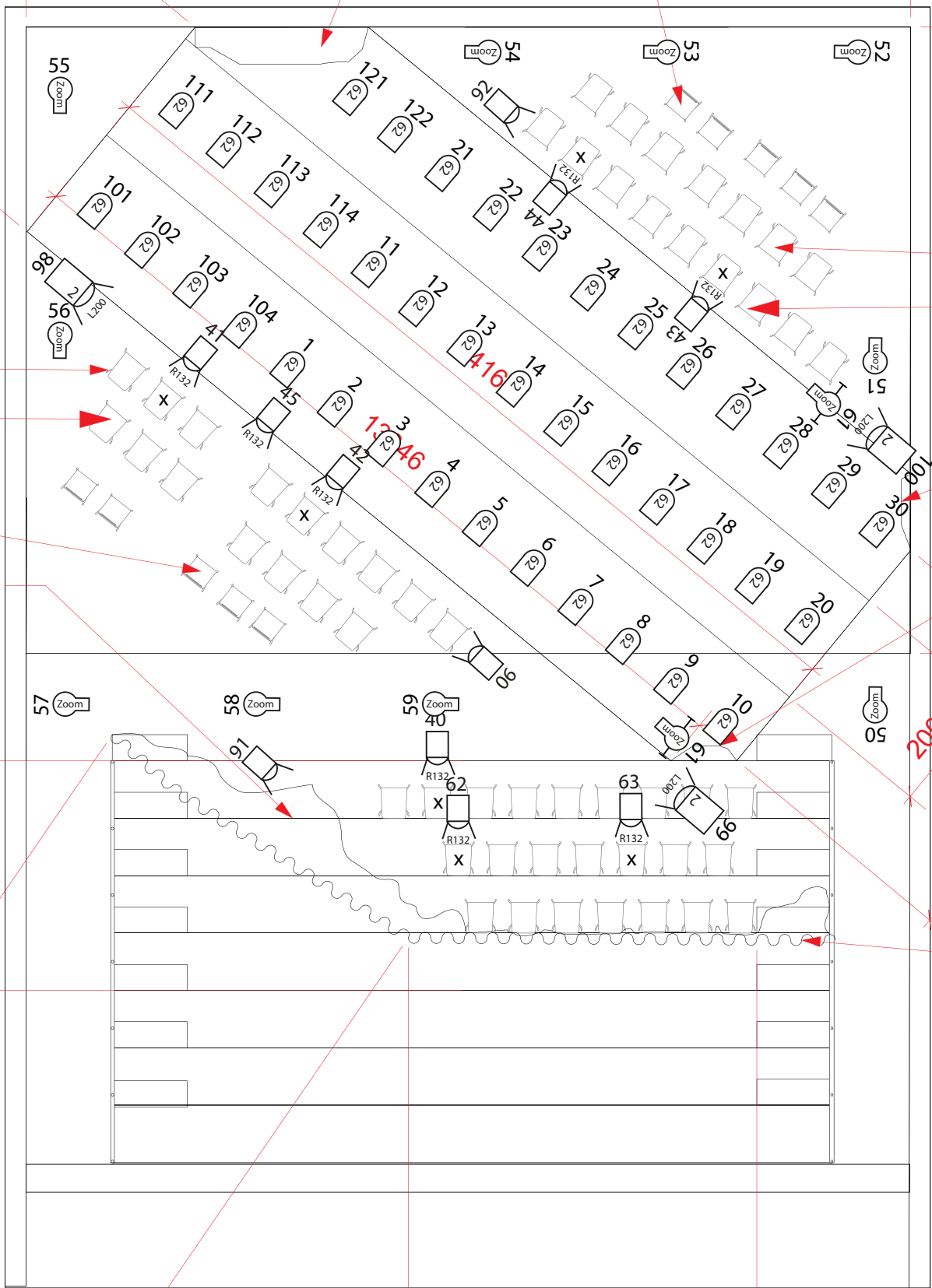
We would appreciate if you can provide an extra monitor with hdmi-connection on FOH for our light console, but it's not absolutely crucial.



Follow spot 1, dimmer



Follow spot 2, direct



3680

2000

4378

50 Zoom

57 Zoom

58 Zoom

59 Zoom

60 Zoom

61 Zoom

55 Zoom

54 Zoom

53 Zoom

52 Zoom

56 Zoom

51 Zoom

50 Zoom

49 Zoom

48 Zoom

47 Zoom

46 Zoom

45 Zoom

44 Zoom

43 Zoom

42 Zoom

41 Zoom

40 Zoom

39 Zoom

38 Zoom

37 Zoom

36 Zoom

35 Zoom

LEGEND:

62 Par64 CP62

PC 1kW

2 PC 2kW

Light plot Not in scale



10

Focus reference:



Middle row, 14 units

All 40 Par 64: direct down shower, banana vertical



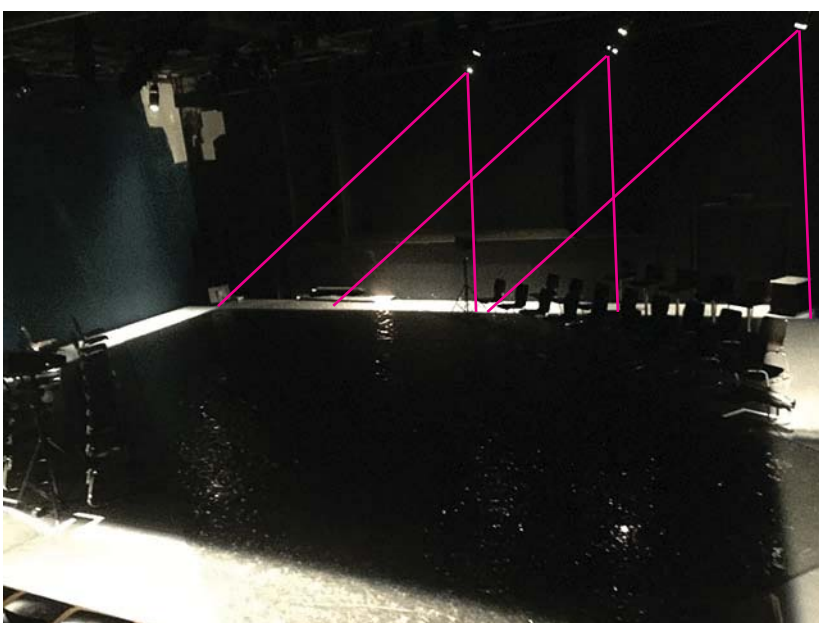
Row 1



Row 2



Row 3



All 10 corridor profiles:  
3 per long side, sharp to the knife + #132



2 per short side



Focus reference:



Performer spots 1,2,3



Performer spots 4,5



Performer spots 6,7,8



2kW's: the whole carpet



Floor profiles: on the carpet corners



Sharp rectangle, +0.50m above floor

## **6 SCHEDULE:**

Get-in time:	maximum 8 hours including sound-check
Rehearsal / warm-up:	2 hours
Strike:	maximum 1,5 hours

## **7 HOSPITALITY & DRESSING ROOMS:**

All the areas on stage and dressing rooms must be wheel chair accessible!

- 2 dressing rooms close to the stage with a hot shower, equipped with mirror, a table, chairs and a costume rail with hangers.  
Please, provide bath towels for 6 people.

For costume maintenance we need an iron and ironing board. If we have multiple shows on your venue, then access to washing machine is needed.

A supply of good-quality drinking water.

Snacks to be provided for 7 persons. For example: fruit juices, tea, coffee, fresh fruits, sandwiches / biscuits / cakes and chocolate. Please have this available already during the get-in.